



Kiwa Nederland B.V.

Sir Winston Churchillaan 273
NL-2288 EA Rijswijk
Postbus 70
NL-2280 AB Rijswijk

Tel.: +31 (0)88 998 44 00
Fax: +31 (0)88 998 44 20
E-mail: info@kiwa.nl



Member of
www.eota.eu

European Technical Assessment

ETA-20/0025 of 07/01/2020

General Part

Technical Assessment Body issuing the European Technical Assessment:

Kiwa Nederland B.V.
Sir Winston Churchillaan 273
NL-2288 EA Rijswijk

Trade name of the construction product

Hydrobath 2.0

Product family to which the construction product belongs

Watertight covering kits based on flexible sheets for wet room floors and or walls

Manufacturer

**HYDROPHON Kunststofftechnik GmbH
Zum Eulenbruch 5
57399 Kirchhundem
GERMANY**

Manufacturing plant

**HYDROPHON Kunststofftechnik GmbH
Zum Eulenbruch 5
57399 Kirchhundem
GERMANY**

This European Technical Assessment contains

9 pages including 1 Annex which form an integral part of this assessment

This European Technical Assessment is issued in accordance with Regulation (EU) No 305/2011, on the basis of

EAD 030436-00-0503(03.2019)

Translations of this European Technical Assessment in other languages shall fully correspond to the original issued document and should be identified as such. Communication of this European Technical Assessment, including transmission by electronic means, shall be in full (excepted the confidential Annex(es) referred to above). However, partial reproduction may be made, with the written consent of the issuing Technical Assessment Body. Any partial reproduction has to be identified as such.

Specific parts

1. Technical description of the product

Hydrobath 2.0 is a watertight covering kit for wet room floors and/or walls based on flexible sheets. The kit consists of the following components:

Hydrobath 2.0 sealing membrane:

self-adhesive polyolefin membrane (black) with one-sided PP-nonwoven coating (white)
(width: 500 to 1000 mm)

Hydrobath 2.0 inner corner pyramide 150 mm:

self-adhesive polyolefin inside corner (black); triangle formed
(width: 150 mm; height: 150 mm; depth: 107 mm)

Hydrobath 2.0 outside corner 200 mm:

self-adhesive polyolefin outside corner (black) with sloped edge
(width: 100 mm; height: 70 mm)

Hydrobath 2.0 Pipe Collar Wall 1/2"

self-adhesive polyolefin (black)
dimension: 120 mm x 120 mm, inside diameter: 10 mm)

Hydrobath 2.0 Pipe Collar Wall 3/4"

self-adhesive polyolefin (black)
dimension: 120 mm x 120 mm, inside diameter: 12 mm)

Hydrobath 2.0 Pipe Collar Wall 1"

self-adhesive polyolefin (black)
dimension: 120 mm x 120 mm, inside diameter: 20 mm)

Hydrobath 2.0 Pipe Collar Floor DN 50:

self-adhesive polyolefin collar
outside diameter: 240 mm; inside diameter: 35 mm

Hydrobath 2.0 Pipe Collar Floor DN 100:

self-adhesive polyolefin collar
outside diameter: 325 mm; inside diameter: 85 mm

Hydrobath 2.0 drain collar

self-adhesive polyolefin collar (black)

Hydrobath 2.0 corner sealing tape:

self-adhesive polyolefin tape
(width: 100 mm)

Hydrobath 2.0 corner sealing tape 120mm with towel protection 20 mm:

self-adhesive polyolefin tape with one-sided, centred 20 mm stripe PP nonwoven
(width: 120 mm)

Hydrobath 2.0 closing sealing tape:

self-adhesive polyolefin tape (black) with one-sided PP-nonwoven coating (white)
(width: 60 to 100 mm)

Ardex P51

primer dispersion (white)

Hydrobath 2.0 Primerspray:

primer based on synthetic rubber (transparent)

Hydrobath 2.0 Primerspray 2.0:

primer based on synthetic rubber (green)

HyPrime emission free:

aqueous dispersion based on acrylonitrile butadiene styrene copolymers (pink)

The sealing kit *Hydrobath 2.0* was tested with the following tile adhesives:

Product	CE-Classification (DIN EN 12004-2: 2017) *
Sopro's No. 1 Flexkleber	C2 TE S1
Ardex X7G Plus	C2 TE S1
Ardex X77	C2 TE S1
Codex CX 3	C2 TE S1
Mapei Ultralite S1	C2 TE S1
PCI FT Extra	C2 TE S1
SCHÖNOX Q6	C2 TE S1
Weber.xerm 852	C2 TE S1

*Classification according to DIN EN 12004-1 (05.2017)

2. Specification of the intended use in accordance with the applicable European Assessment Document (EAD-030436-00-0503)

The intended use of the covering kit:

- Indoor applications, where the kit is not exposed to temperatures (i.e. temperature of structure) below 5 °C and above 40 °C, in the following uses:
 - Floor and/or wall surfaces with only occasional direct exposure to water, e.g. at a good distance from shower or bathtub.
 - Floors and/or walls in shower areas or around bathtubs used for a few showers daily, e.g. in ordinary dwellings, multi-family houses and hotels
 - Floor and/or wall surfaces with exposure to water more frequent or of longer duration than normally anticipated in dwellings, e.g. public wet rooms, schools and sport facilities.

The various intended uses indicated above do not lead to different assessment criteria and the ETA will cover all intended uses. However the use may be limited due to national legislation in the member states.

The sealing kit is intended to be used on flexible and rigid substrates which can be moisture sensitive and non-moisture sensitive. Gullies and ceramic tiles are not part of the kit. It is up to the responsibility of the user to use suitable products.

The provisions and the verification and assessment methods included or referred to in this EAD have been written based upon the assumed working life of the watertight covering kits for the intended use of 25 years, provided that the watertight coverings kit is subject to appropriate installation, use and maintenance. These provisions are based upon the current state of art and the available knowledge and experience. "Assumed working life" means that it is expected that, when an assessment following the EAD-provisions is made and when this working life has elapsed, the real working life may be, in normal use conditions, considerably longer without major degradation affecting the essential requirements.

The indications given as to the working life of a watertight covering kit cannot be interpreted as a guarantee given by the producer or the approval body. They should be regarded only by the means of choosing the appropriate criteria for watertight covering kits in relation to the expected economically reasonable working life of the works.

3. Performance of the product and references to the methods used for its assessment

3.1 Essential Requirement 1: Mechanical resistance and stability

Not relevant

3.2 Essential Requirement 2: Safety in case of fire

Product characteristic	Performance
Reaction to fire	classification E according to EN ISO 11925-2

3.3 Essential Requirement 3: Hygiene, health and environment

Product characteristic	Performance
Release of dangerous substances	declaration of the applicant
Vapour permeability (23°C – 50/90% r.h.)	$S_d = 10,7 \text{ m}$
Water tightness	watertight
Crack bridging ability	category 1: 0,4 mm
Bond strength	category 1: $\geq 0,2 \text{ MPa}$
Joint bridging ability	category 2: watertight
Watertightness around penetrations	category 2: watertight
Joint strength	$F = 37,3 \text{ N}$
Flexibility	passed

3.4 Essential Requirement 4: Safety in use

Product characteristic	Performance
Slipperiness	No performance determined

3.5 Essential Requirement 5: Protection against noise

Not relevant

3.6 Essential Requirement 6: Energy economy and heat retention

Not relevant

3.7 General aspects relating to fitness for use

Product characteristic	Performance
Dimensional stability	all directions < ± 1 %
Resistance to temperature	temperature resistant
Resistance to water	water resistant
Resistance to alkalinity	alkali resistant
Thickness	0,9 mm
Applicability	applicable

3.8 Assessment and verification of constancy of performance (hereinafter AVCP) system applied, with reference to its legal base

The performance of the watertight membrane kit results from the characteristic values and categories. The supplementing statements of the manufacturer stated in the MTD for design and application of the watertight system for creating a watertight covering under wearing surface for floors and/or walls in indoor wet areas shall be considered.

The performance of the watertight membrane can be assumed only, if the following aspects are considered:

- Only those components which are specified components of the kit can be used
- The appropriate tools shall be used and adjuvant, precautions shall be taken
- Inspecting the substrate surface for cleanliness and correct treatment

4. Technical details necessary for the implementation of the AVCP system, as provided for in the applicable EAD

Product	Intended use	Classification	System
Watertight covering kits for wet room floors and or walls	Indoor applications	-	2+
	According to the provisions to reaction of fire	E	3

5. Technical details necessary for the implementation of the AVCP system

Technical details necessary for the implementation of the AVCP system are laid down in the control plan which is deposited at the certification body.

Issued in Rijswijk on 22-03-2022

By

A handwritten signature in black ink, appearing to read 'Ron Scheepers', with a long horizontal stroke extending to the right.

Ron Scheepers
Kiwa Nederland B.V.

Annex 1

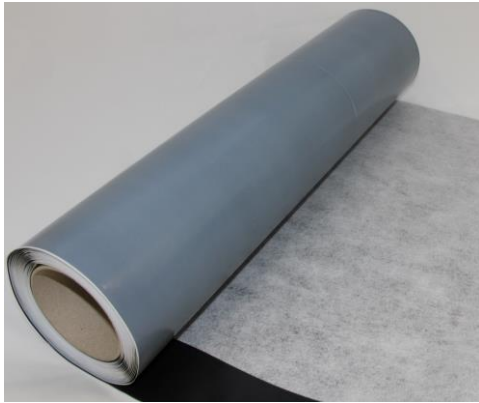


Figure 1: Hydrobath 2.0 sealing membrane 500 mm

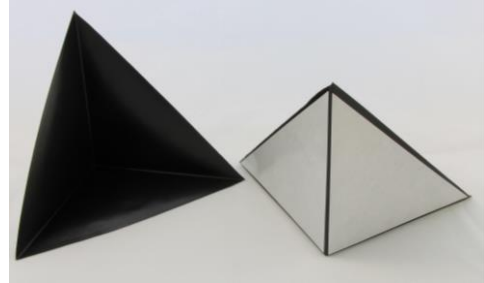


Figure 2: Hydrobath 2.0 inner corner pyramide 150 mm

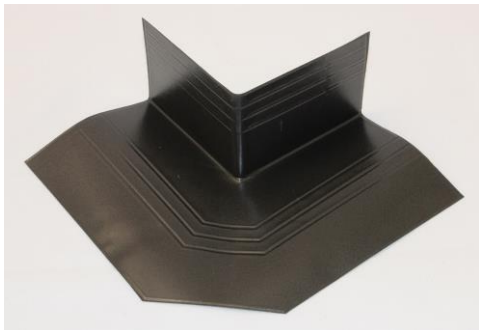


Figure 3: Hydrobath 2.0 outside corner 200 mm

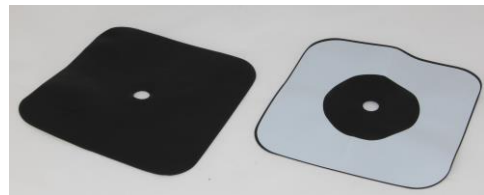


Figure 4: Hydrobath 2.0 Pipe Collar Wall



Figure 5: Hydrobath 2.0 Pipe Collar Floor

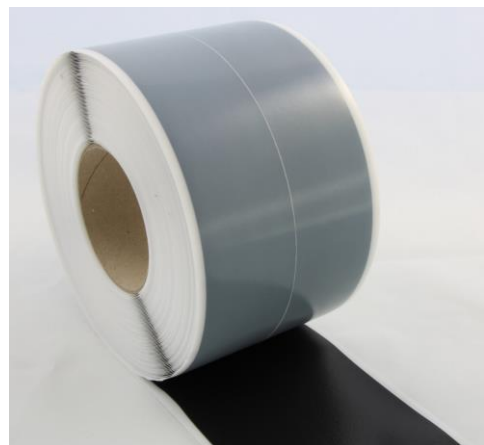


Figure 6: Hydrobath 2.0 corner sealing tape



Figure 7: Hydrobath 2.0 closing sealing tape

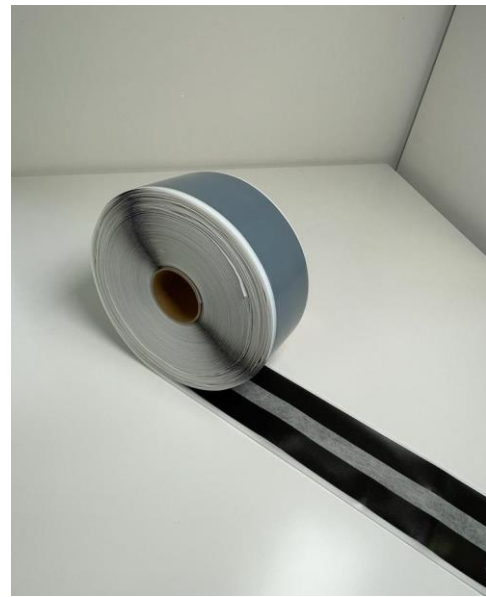


Figure 8: Hydrobath 2.0 corner sealing tape
120mm with towel protection 20 mm